

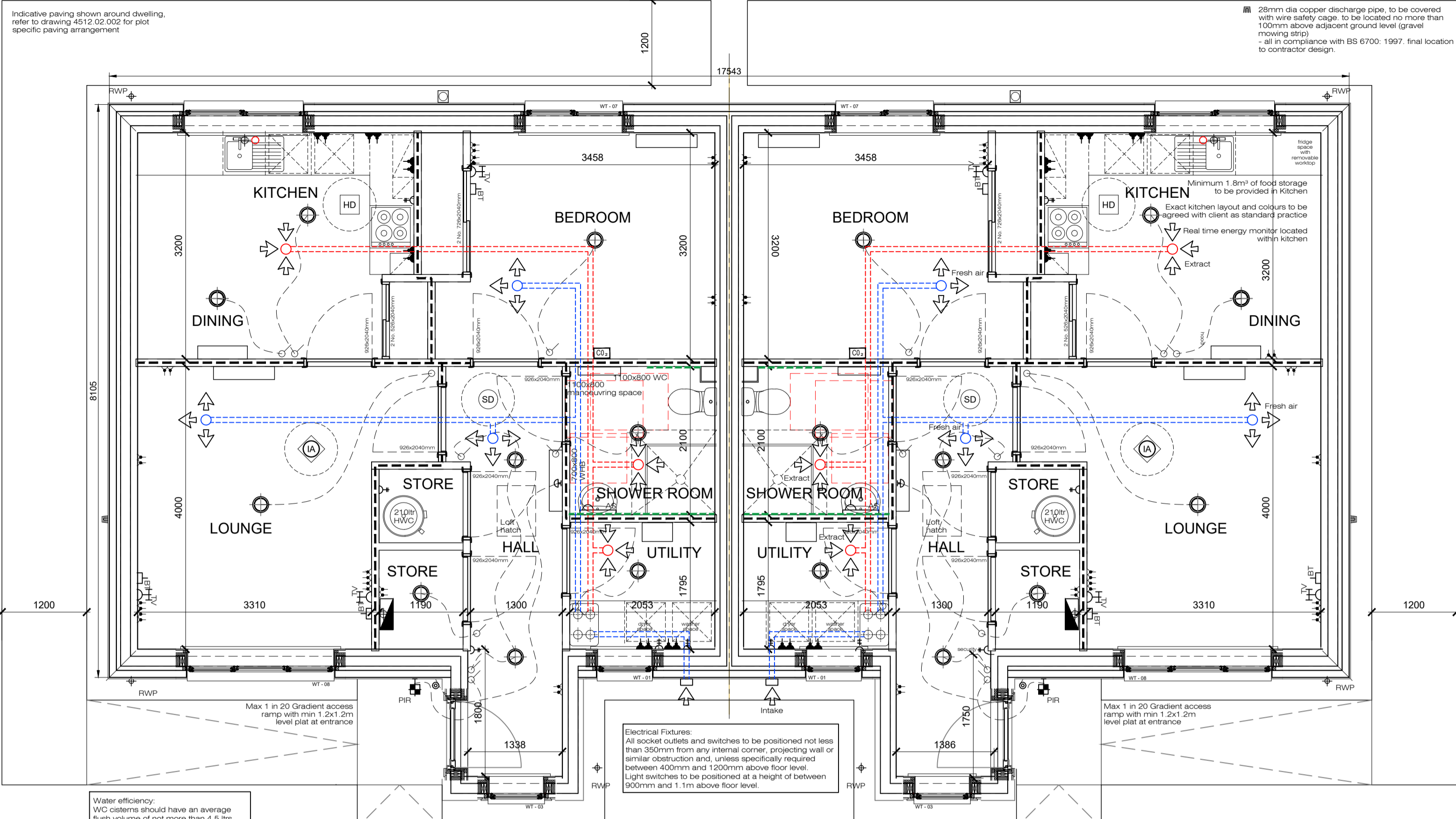
Note to Designers and Contractors

Under the CDM2015 regulations BSC has sought to eliminate or reduce risks where possible as part of the design process.

Significant residual risks, or areas of work that require special attention during construction which have been identified by BSC, are indicated on project drawings by the following symbol **▲**.

It is anticipated that other designers and contractors will co-operate to identify any potential construction hazards and to eliminate them where possible.

Measures to minimise residual hazards will be reviewed on a regular basis.

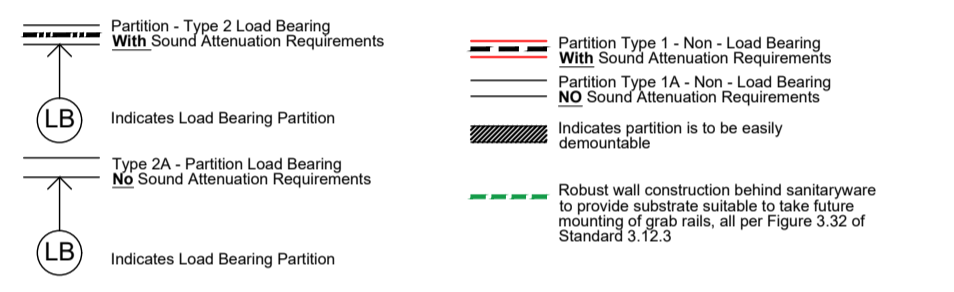


GROUND FLOOR PLAN
Scale 1:50

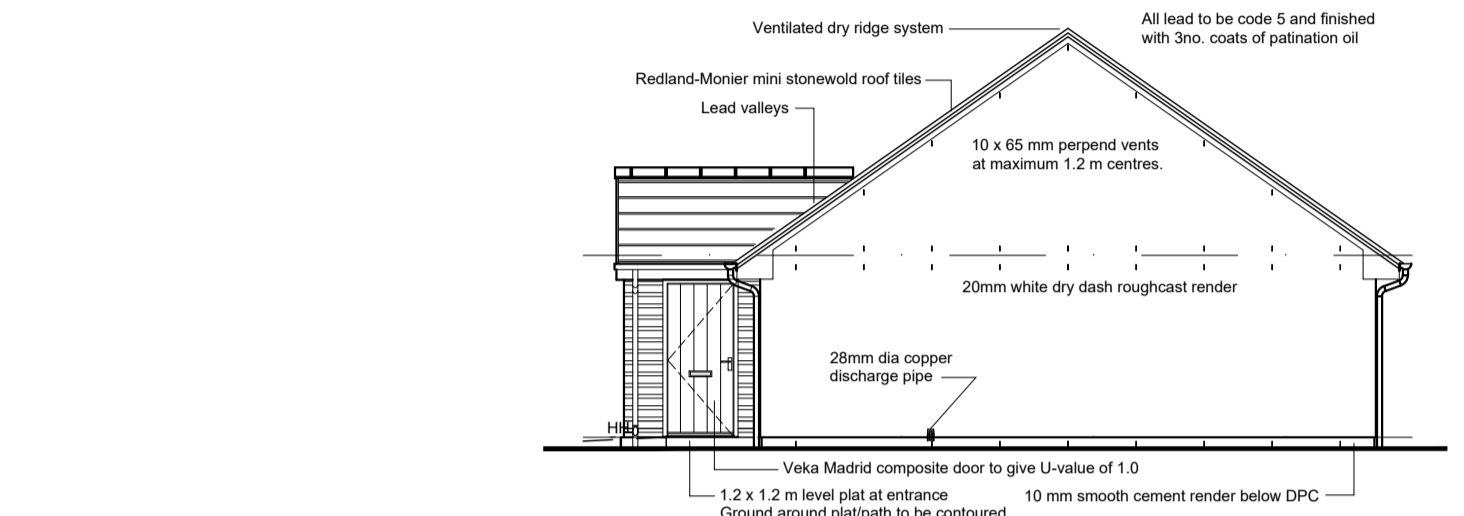
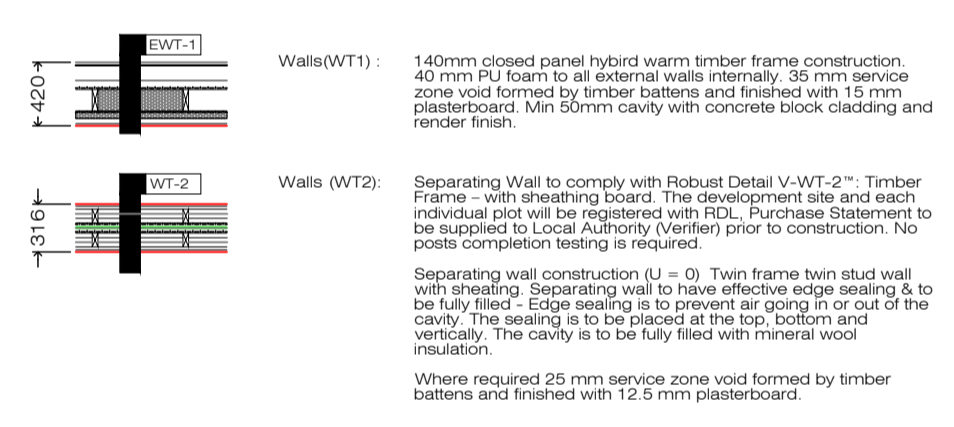
ELECTRICAL LEGEND
(TO FULLY COMPLY WITH BS7671:2008)

SWITCHES	Height	LIGHTING	Height
Light switch	1050	Pendant light fitting (Low Energy Light Bulb Fitted)	
Two way light switch	1050	Shrouded light fitting (Low Energy Light Bulb Fitted)	
Pull cord switch (to cord end)		Wall light fitting	2050
External socket with RCD		Under Wall unit Spotlight fitting (IP65 rating for wet areas)	
Multiple retractable 13amp switched socket outlet (housed within workshop)		Spotlight fitting (IP65 rating for wet areas)	
Twin 13amp switched socket outlet (worktop level)	450	External light fitting with Photocell & movement sensor (Max 100 lamp - watts per light)	2050
Twin 13amp switched socket outlet (worktop level)	1050	VENTILATION	Height
Switched fused spur point (High level/ low level) Switch at worktop level	2200/800	Trickle vent - ducted at ceiling level to outside using proprietary slim ducts.	2200
Cooker control unit for hob & oven with low level connection point	1050/500		
Fused spur point switched from multi gang appliance as noted on drawing/high level/ low level	2200/600		
Multi gang switch - appliance noted on plan	1050	OTHER ITEMS	POINT 6. Height
Central heating control unit	1050	FIRE ALARM SYSTEM: Entire fire alarm system to be minimum Category D to BS 5839 Part 6: 2019	
Central heating weather compensator (North facing Wall only)	1050	Optical smoke alarms should conform to BS EN 14604: 2005 and wired via permanent & protected circuit, interconnected to any other alarm within the dwelling. Minimum distance to light fitting 300mm.	
Heating Thermostat	1050	Heat alarm conforming to BS 5446: Part 2: 2003 wired via permanent & protected circuit, interconnected to any other smoke alarm within the dwelling. Minimum distance to light fitting 300mm.	
Shaver outlet	1200	Ionisation smoke alarms to conform to BS EN 14604: 2005 wired via permanent & protected circuit, interconnected to any other smoke alarm within the dwelling. Minimum distance to light fitting 300mm.	
TV Aerial Co-axial	450	Consumer unit	1400
British Telecom Outlet	450	Door bell push	1050
Shower - Spec by Client		Door bell sounder	1050
ACCESS TO MANUAL CONTROLS			
Window handle locations & heights			
XXXmm (Max height of window handle)			

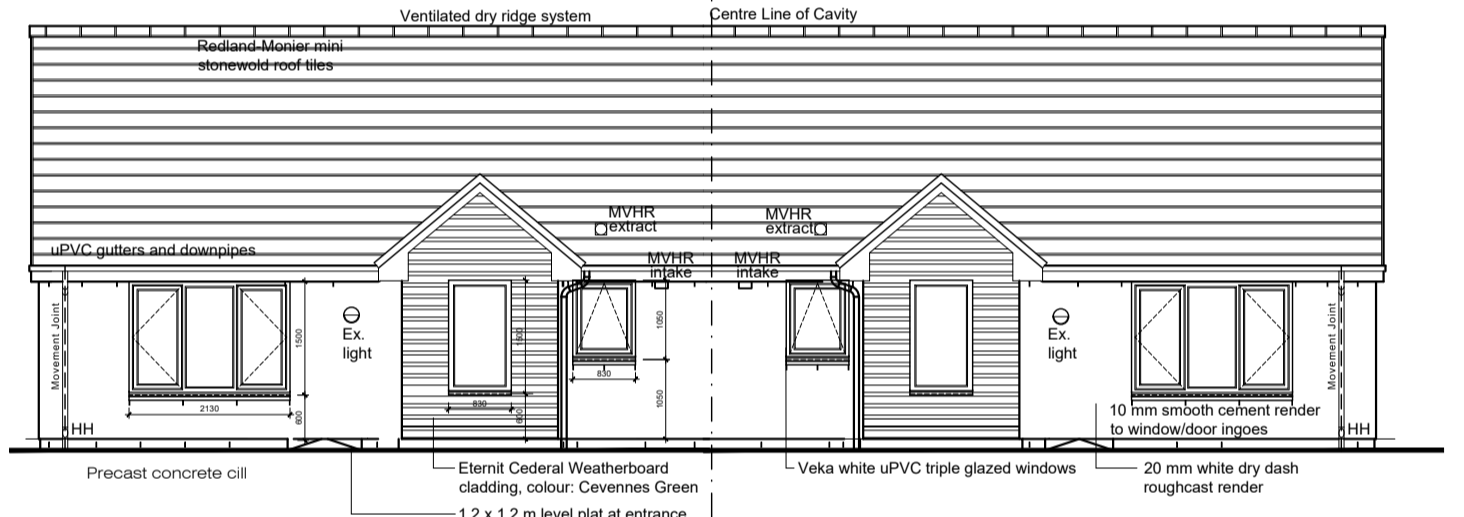
INTERNAL PARTITION LEGEND



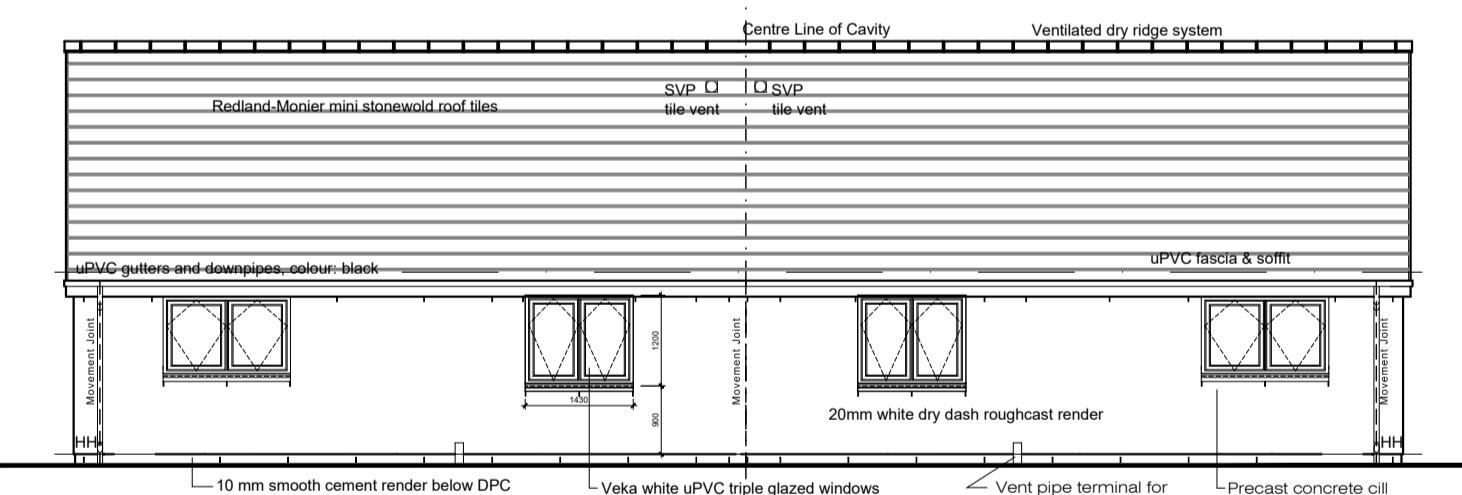
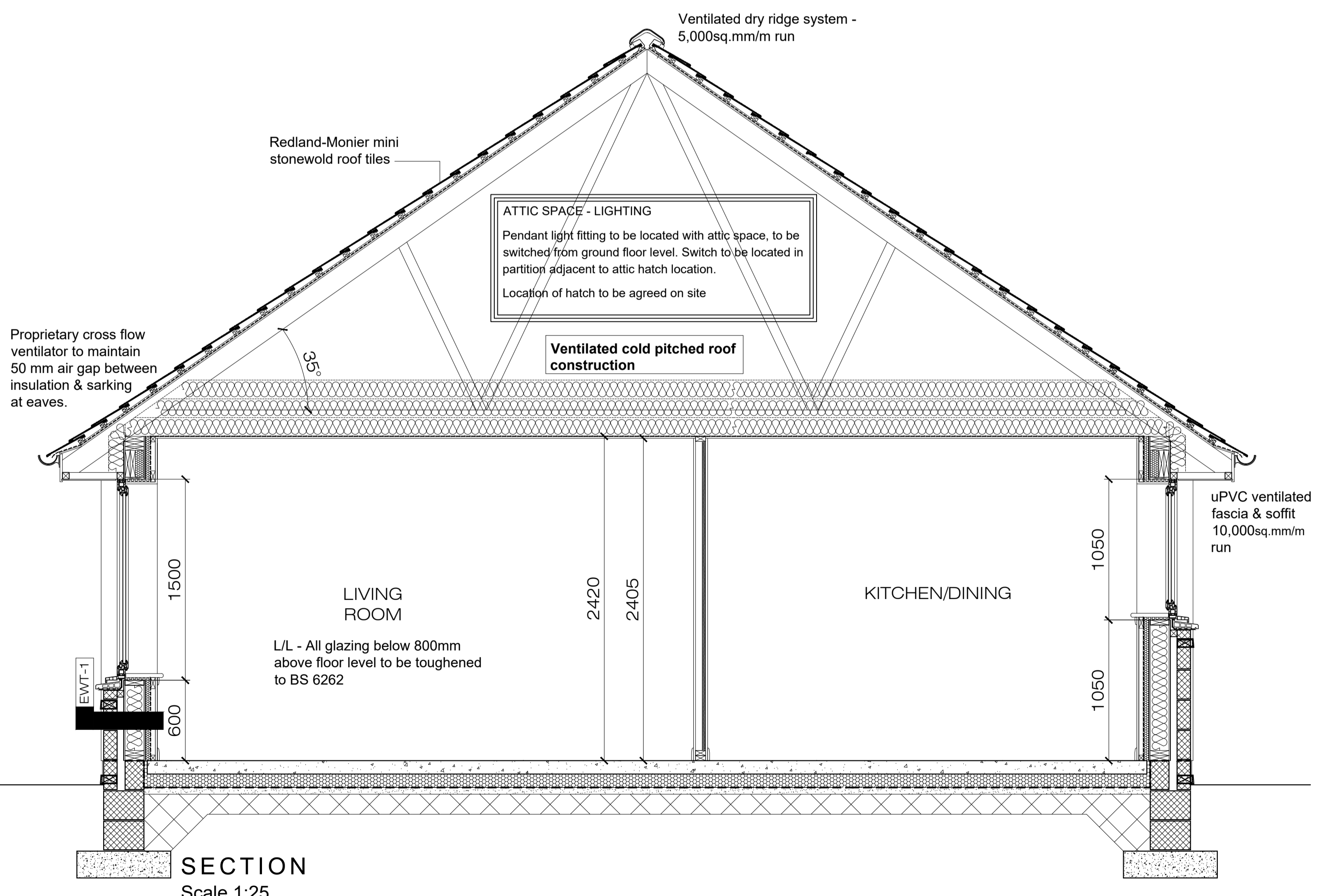
EXTERNAL WALL LEGEND



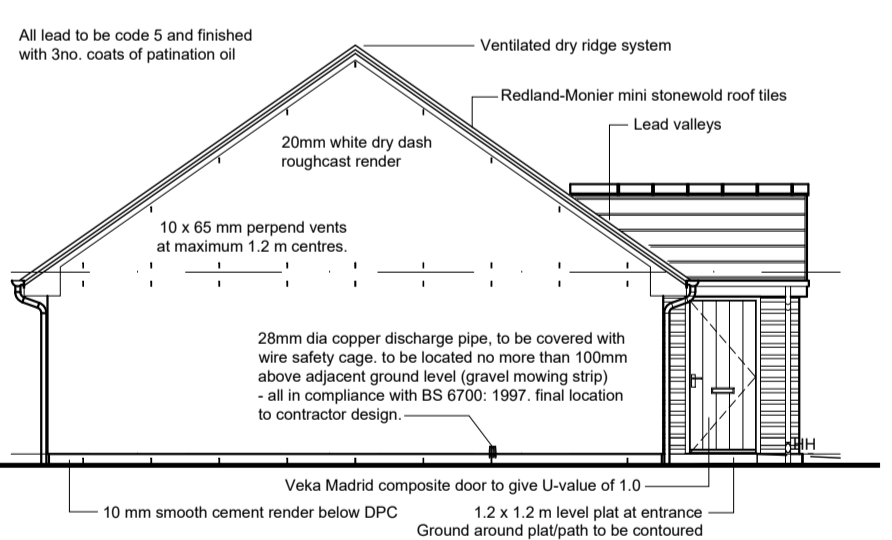
GABLE ELEVATION
Scale 1:100



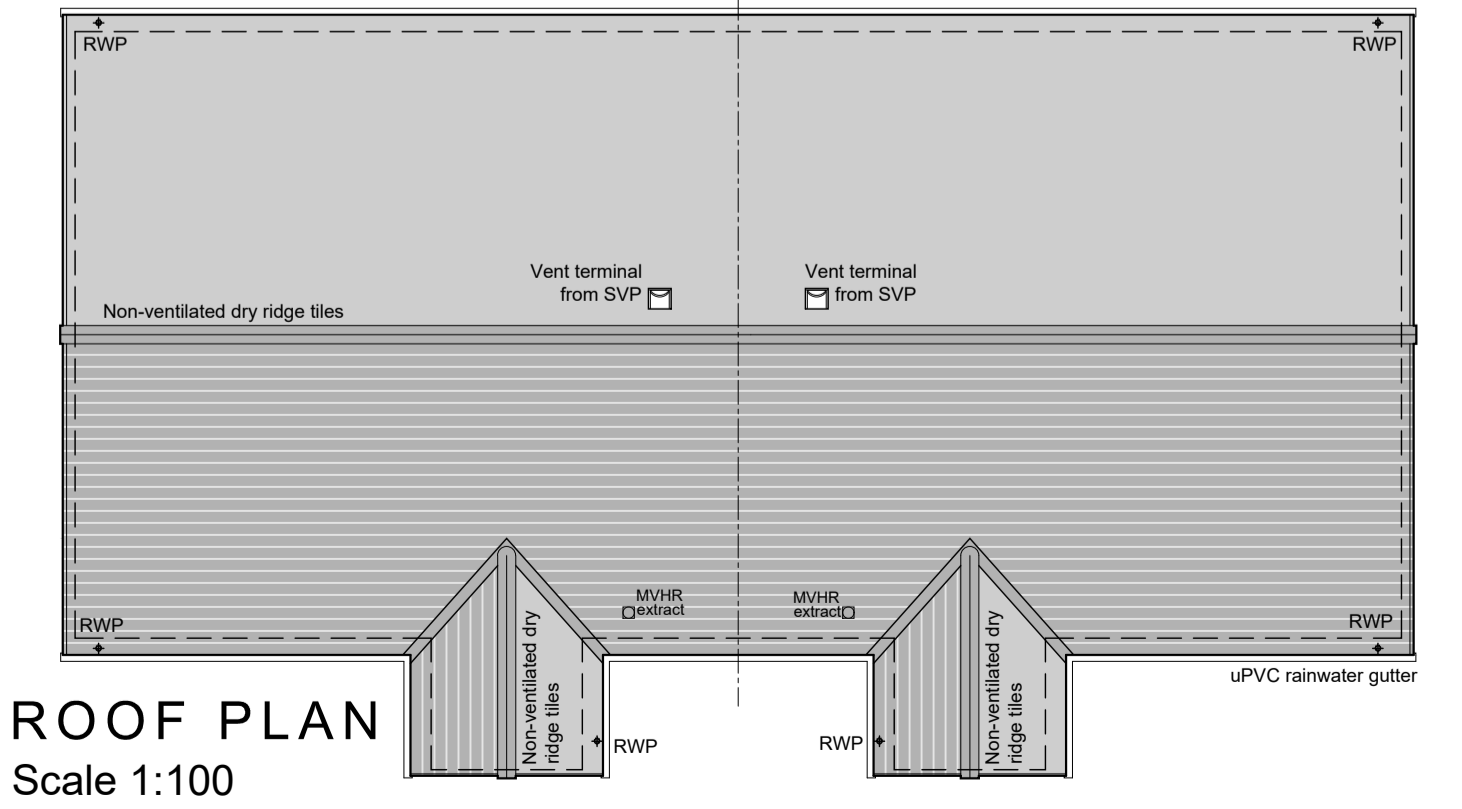
FRONT ELEVATION
Scale 1:100



REAR ELEVATION
Scale 1:100



GABLE ELEVATION
Scale 1:100



1:25 0 500 1000 1500mm

1:50 0 1m 2m 3m

1:100 0 1m 2m 3m 6m

REV	DATE	DESCRIPTION	DRN

Bracewell Stirling CONSULTING

38 WALKER TERRACE, TILLCULLY, FK13 6EF 01259 750301
5 NESS BANK, INVERNESS, IV2 4SF 01463 233760
15 LOCHSIDE STREET, OBAN, PA34 4HP 01631 595054

PROPOSED 17 UNITS FOR OHAL SITE K-5 PHASE 1A WALLWALL, KIRKWAL ORKNEY BUILDERS (CONTRACTORS) LTD

2A2PB_PLANS ELEVATIONS AND SECTIONS

STATUS: **BUILDING WARRANT**

SCALE: 1:25 / 50 / 100 DRAWN: GM
PAPER SIZE: A1 DATE: Jul 2022
DWG No. 4808-03-102 REV.

Note to Designers and Contractors

Under the CDM2015 regulations BSC has sought to eliminate or reduce risks where possible as part of the design process. Significant residual risks, or areas of work that require special attention during construction, which have been identified by BSC, are indicated on project drawings by the following symbol **▲**. It is anticipated that other designers and contractors will cooperate to identify any potential construction hazards and to eliminate them where possible. Measures to minimise residual hazards will be reviewed on a regular basis.

ELECTRICAL LEGEND
(TO FULLY COMPLY WITH BS7671:2008)

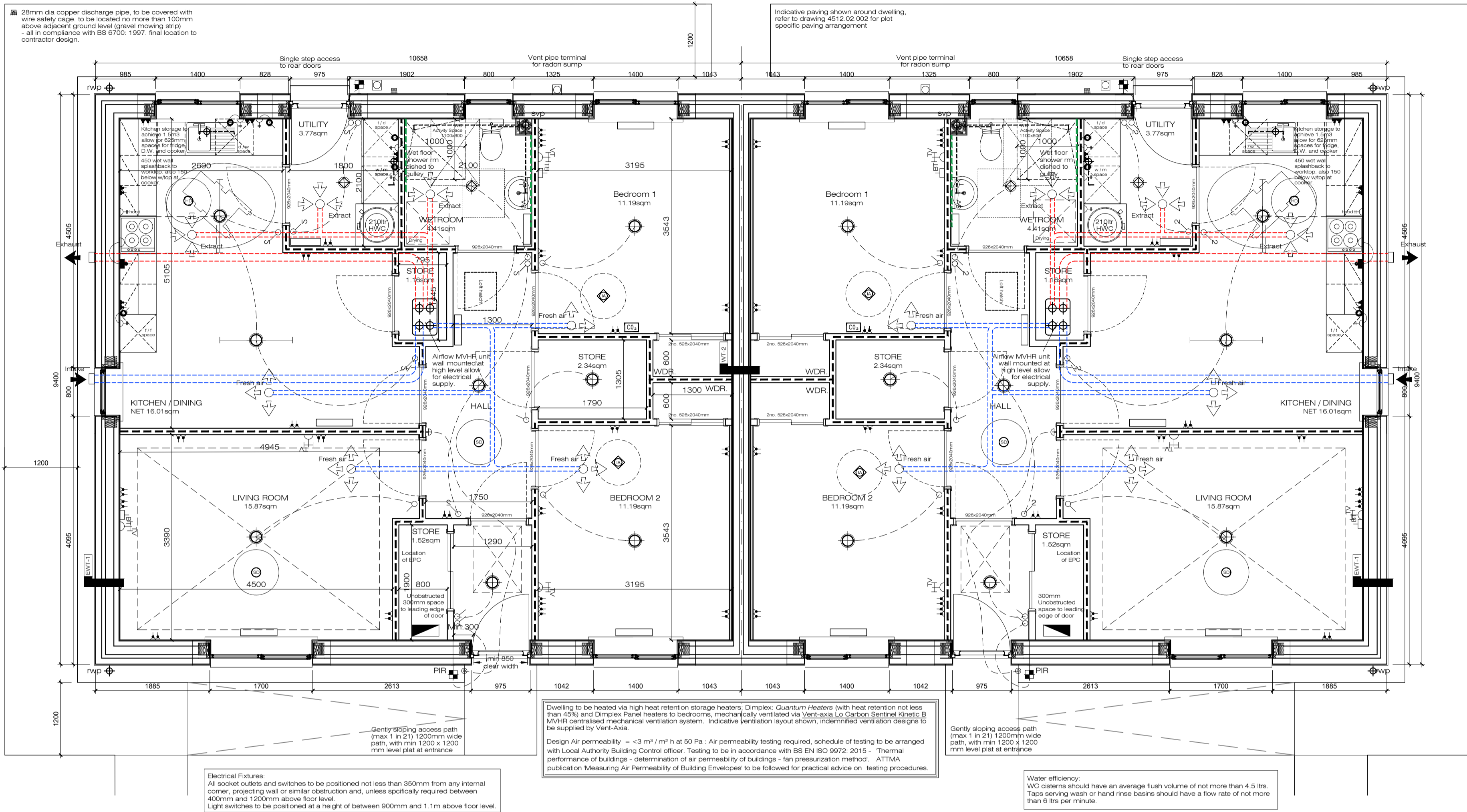
Symbol	Description	Height
○	Light switch	1050
○	Two way light switch	1050
○	Pull cord switch	[to cord end]
□	External socket with RCD	Height
⊕	Multiple retractable 13amp switched socket outlet (housed within worktop)	Height
⊕	Twin 13amp switched socket outlet	450
⊕	Twin 13amp switched socket outlet (worktop level)	1050
⊕	Cooker control unit for hob & oven with low level connection point	1050 500
⊕	Fused spur point switched from multi gang appliance as noted on drawing (High level / low level)	2200/600 1050
⊕	Multi gang switch - appliance noted on plan	1050
⊕	Central heating control unit	1050
⊕	Central heating weather compensator (North facing Wall only)	1050
⊕	Heating Thermostat	1050
⊕	Shaver outlet	1200
⊕	TV Aerial Co-axial	450
⊕	British Telecom Outlet	450
⊕	Shower - Spec by Client	1400
⊕	ACCESS TO MANUAL CONTROLS - Window handle locations & heights	
⊕	XXXmm (Max height of window handle)	
○	Pendant light fitting (Low Energy Light Bulb Fitted)	Height
○	Shrouded light fitting (Low Energy Light Bulb Fitted)	Height
○	Wall light fitting	2050
○	Under Wall unit Spotlight fitting (IP65 rating for wet areas)	Height
○	Spotlight fitting (IP65 rating for wet areas)	Height
○	External light fitting with Photocell & movement sensor (Max 100 lamp - watts per light)	2050
○	VENTILATION	Height
○	Trickle vent - ducted at ceiling level to outside using proprietary slim ducts.	2200
○	OTHER ITEMS	POINT 6. Height
○	FIRE ALARM SYSTEM: Entire fire alarm system to be minimum Category D to BS 5839 Part 6: 2019	
○	Optical smoke alarms should conform to BS EN 14604: 2005 and wired via permanent & protected circuit, interconnected to any other alarm within the dwelling. Minimum distance to light fitting 300mm.	
○	Heat alarm conforming to BS 5446: Part 2: 2003 wired via permanent & protected circuit, interconnected to any other smoke alarm within the dwelling. Minimum distance to light fitting 300mm.	
○	Ionisation smoke alarms to conform to BS EN 14604: 2005 wired via permanent & protected circuit, interconnected to any other smoke alarm within the dwelling. Minimum distance to light fitting 300mm.	
○	Consumer unit	1400
○	Door bell push	1050
○	Door bell sounder	1050

INTERNAL PARTITION LEGEND

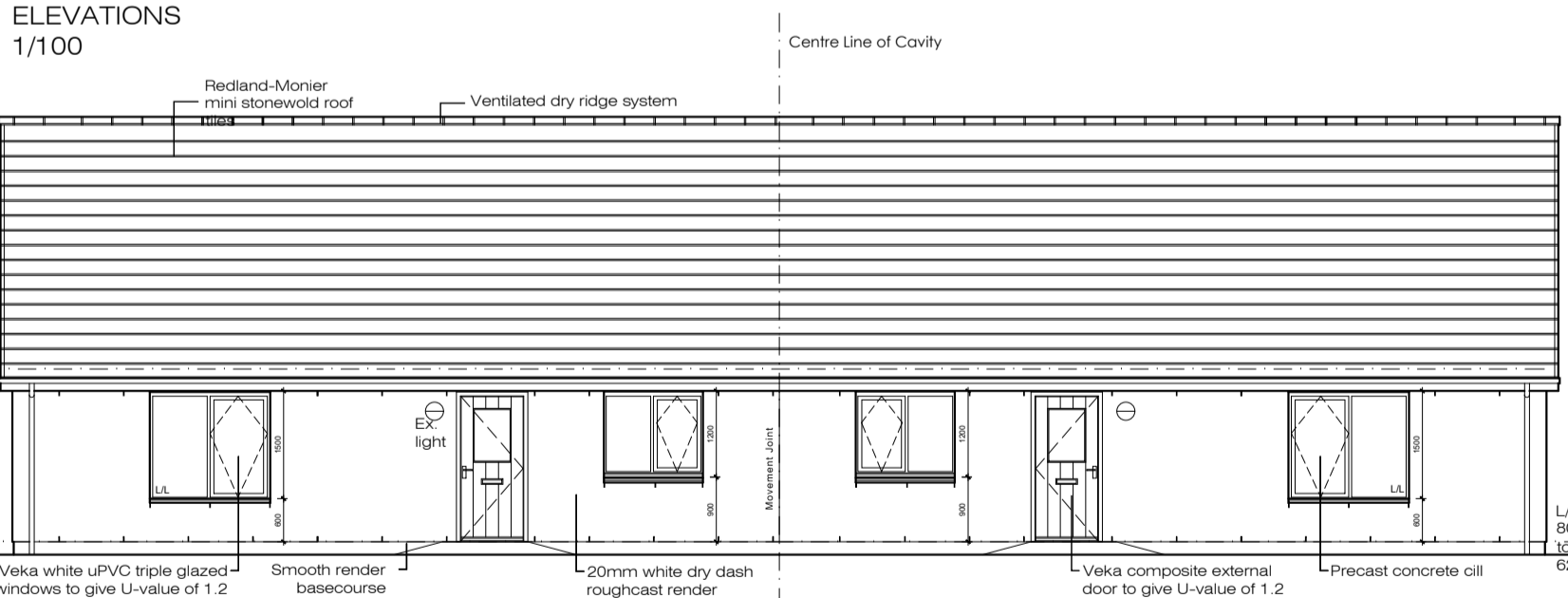
---	Partition - Type 2 Load Bearing With Sound Attenuation Requirements	---	Partition Type 1 - Non - Load Bearing With Sound Attenuation Requirements
---	Partition Type 1A - Non - Load Bearing NO Sound Attenuation Requirements	---	Partition Type 1A - Non - Load Bearing NO Sound Attenuation Requirements
---	Indicates Load Bearing Partition	---	Indicates partition is to be easily demountable
---	Type 2A - Partition Load Bearing No Sound Attenuation Requirements	---	Robust wall construction behind sanitaryware to provide substrate suitable to take future mounting of grab rails, all per Figure 3.32 of Standard 3.12.3
---	Indicates Load Bearing Partition		

EXTERNAL WALL LEGEND

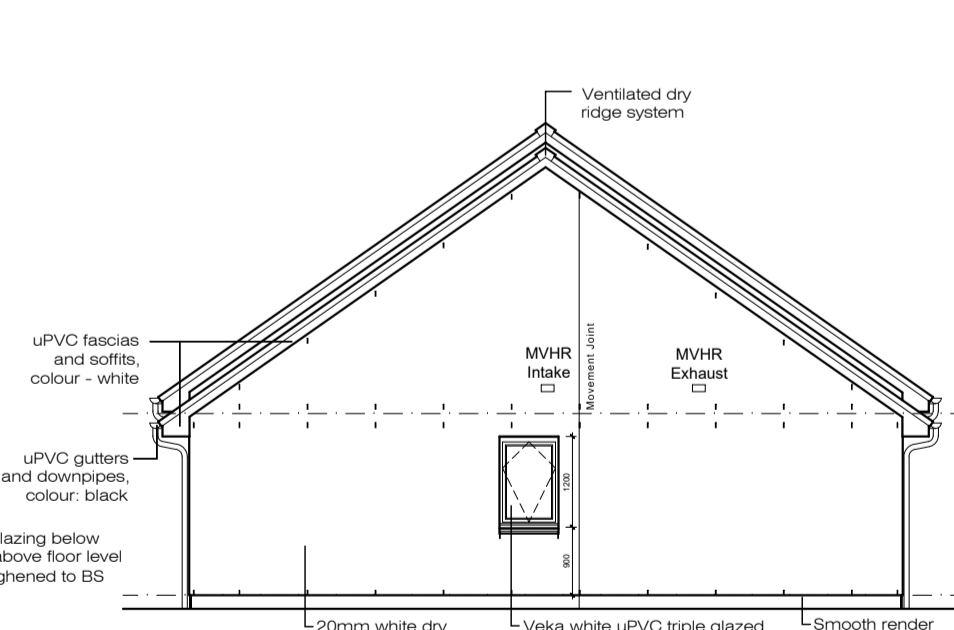
EW1	Walls (WT1): 140mm closed panel hybrid warm timber frame construction. 40 mm PU foam to all external walls internally. 35 mm service zone void formed by timber battens and finished with 15 mm plasterboard. Min 50mm cavity with concrete block cladding and render finish.
EW2	Walls (WT2): Separating Wall to comply with Robust Detail V-WT-2". Timber Frame - with breaching board. The development site and each individual plot will be registered with RCL. Purchase Statement to be supplied to Local Authority (Owner) prior to construction. No posts completion testing is required. Separating wall construction (U = 0). Twin frame beam stud wall with sheathing. Separating wall to have effective edge sealing & to be fully fixed. Edge sealing is to prevent air going in or out of the cavity. The sealing is to be placed at the top, bottom and vertically. The cavity is to be fully filled with mineral wool insulation. Where required 25 mm service zone void formed by timber battens and finished with 15 mm plasterboard.



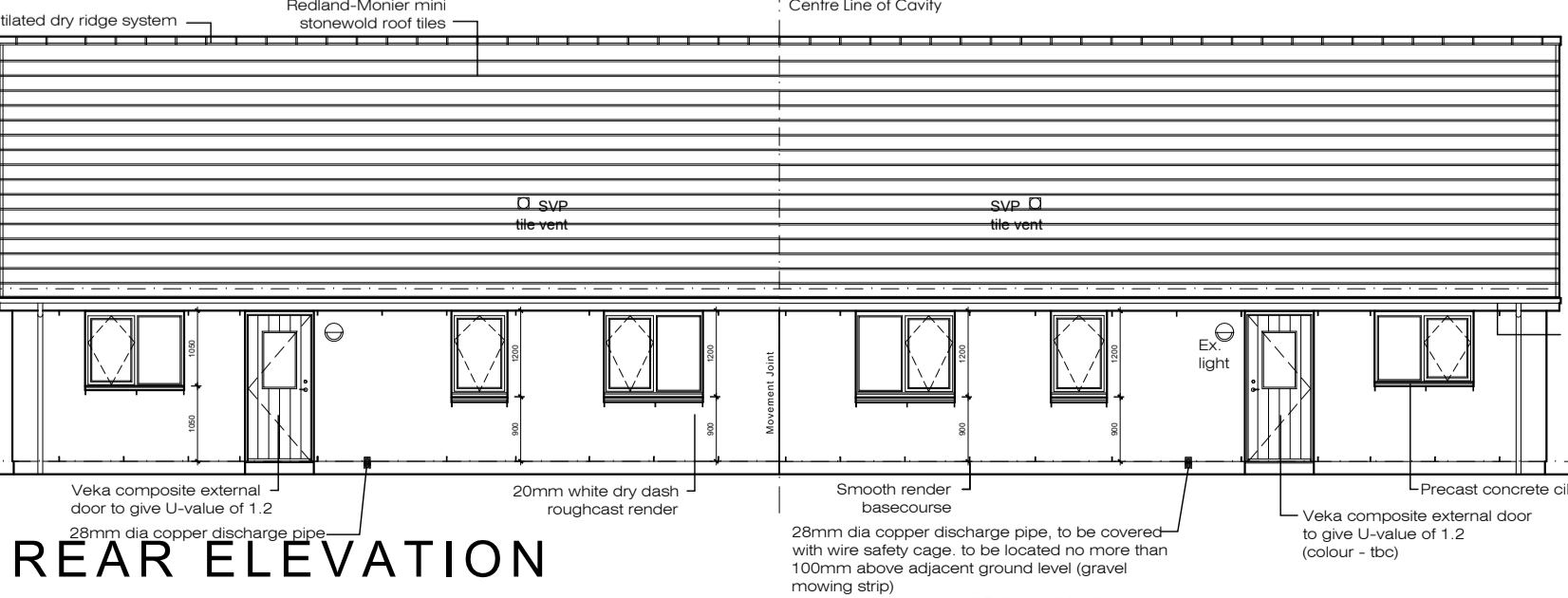
GROUND FLOOR PLAN
Scale 1:50



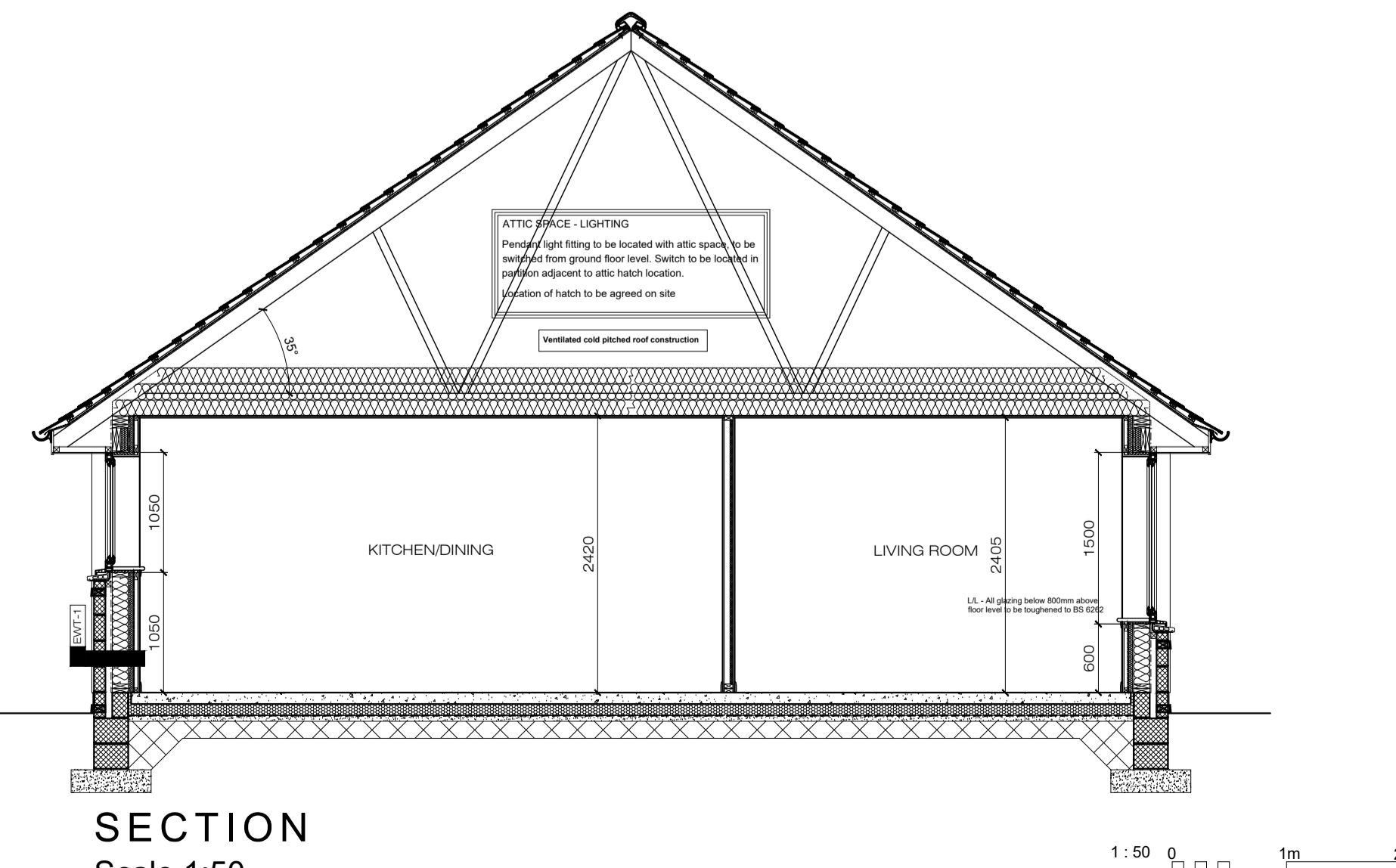
FRONT ELEVATION
Scale 1:100



GABLE ELEVATION
Scale 1:100



REAR ELEVATION
Scale 1:100



SECTION
Scale 1:50

REV DATE DESCRIPTION DRN

Bracewell Stirling CONSULTING

38 WALKER TERRACE, TILLCULTRY, FK13 6EF 01259 750001
5 NESS BANK, INVERNESS, IV2 4SF 01463 233760
15 LOCHSIDE STREET, OBAN, PA34 4HP 01631 359054

PROPOSED 17 UNITS FOR OHAL
SITE K-5 PHASE 1A WALLWALL, KIRKWAL
ORKNEY BUILDERS (CONTRACTORS) LTD

3A4PB PLANS, ELEVATIONS AND SECTION

STATUS: **BUILDING WARRANT**

SCALE: 1:50 DRAWN: GM
PAPER SIZE: A1 DATE: Jul 2022
DWG No. 4808-03-202 REV.

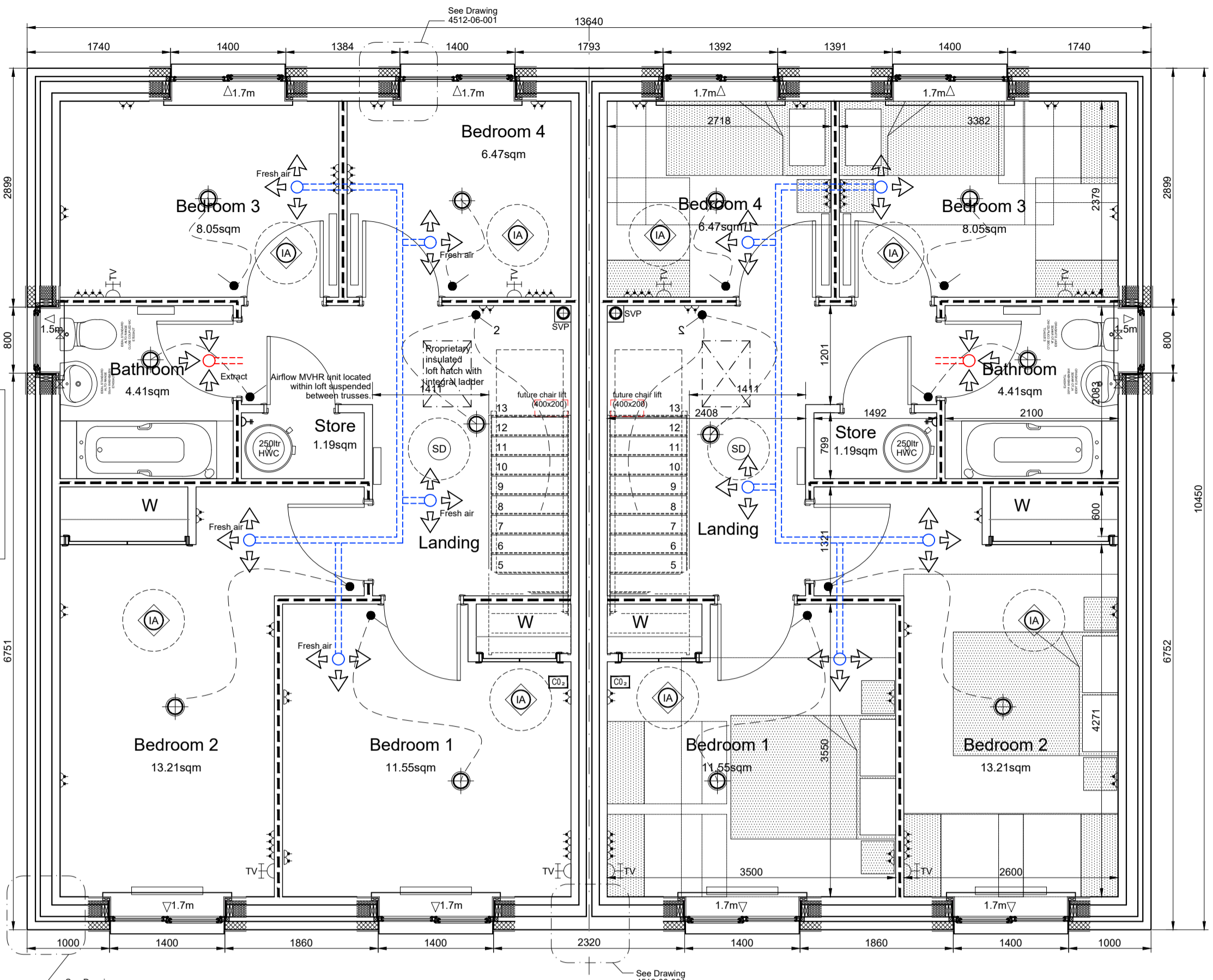
Note to Designers and Contractors

Under the CDM2015 regulations BSC has sought to eliminate or reduce risks where possible as part of the design process.

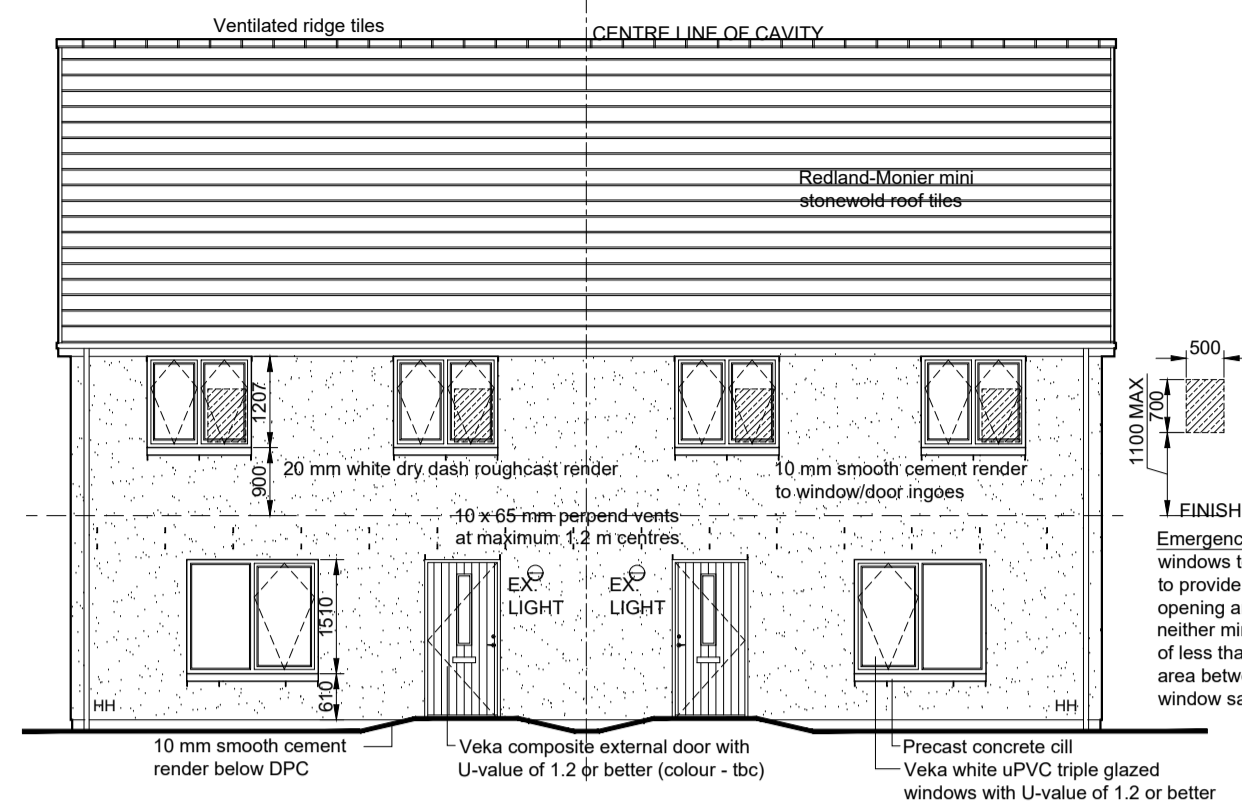
Significant residual risks, or areas of work that require special attention during construction, which have been identified by BSC, are indicated on project drawings by the following symbol **▲**.

It is anticipated that other designers and contractors will co-operate to identify any potential construction hazards and to eliminate them where possible.

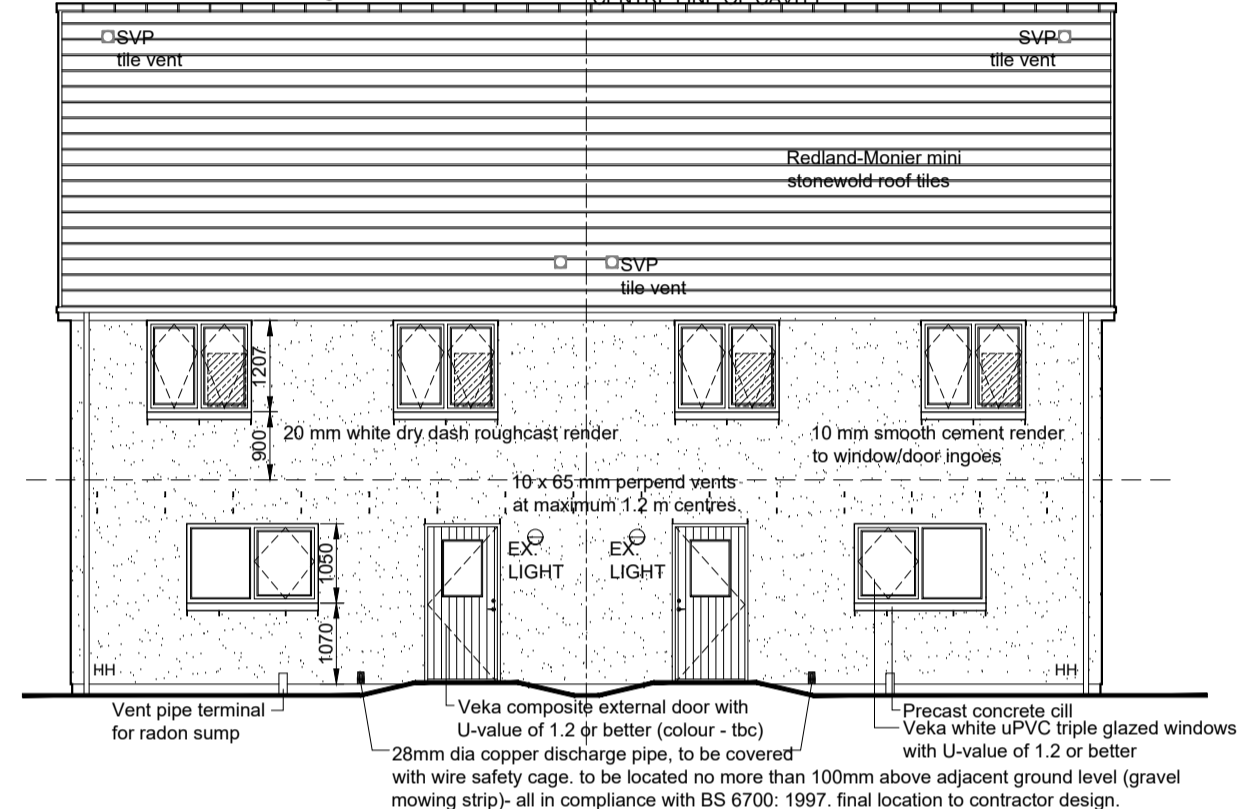
Measures to minimise residual hazards will be reviewed on a regular basis.



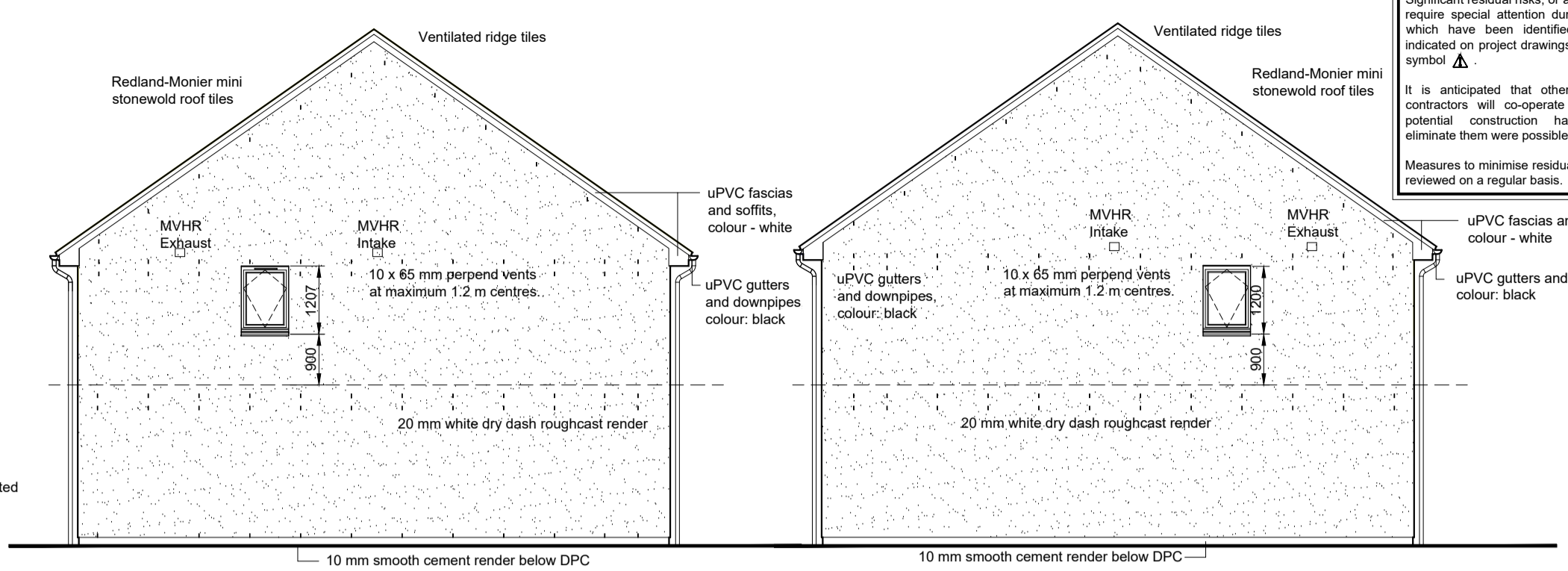
FIRST FLOOR PLAN
Scale 1:50



FRONT ELEVATION
Scale 1:100

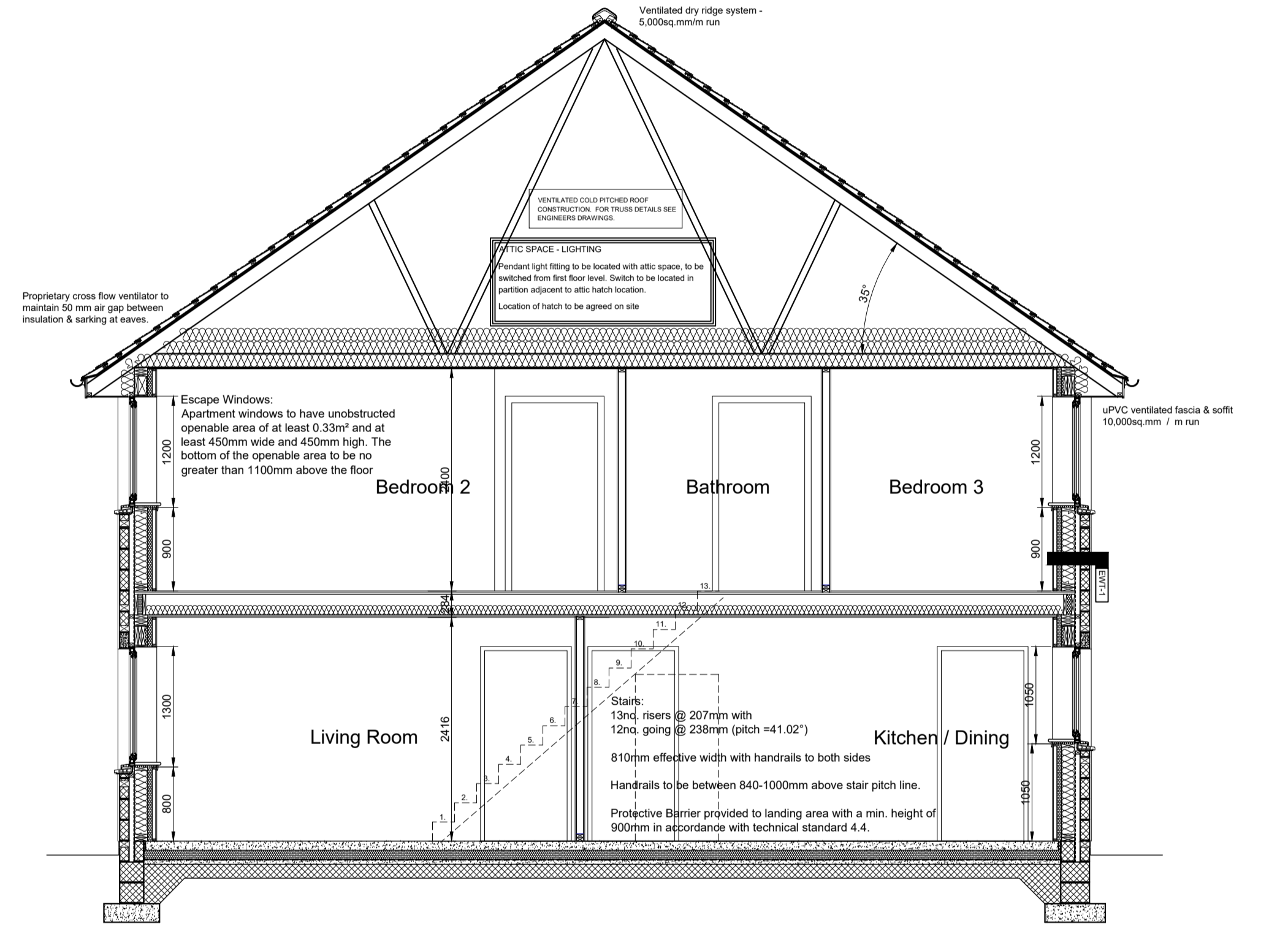


REAR ELEVATION
Scale 1:100



SIDE ELEVATION
Scale 1:100

SIDE ELEVATION
Scale 1:100



SECTION
Scale 1:50

ELECTRICAL LEGEND
(TO FULLY COMPLY WITH BS7671:2008)

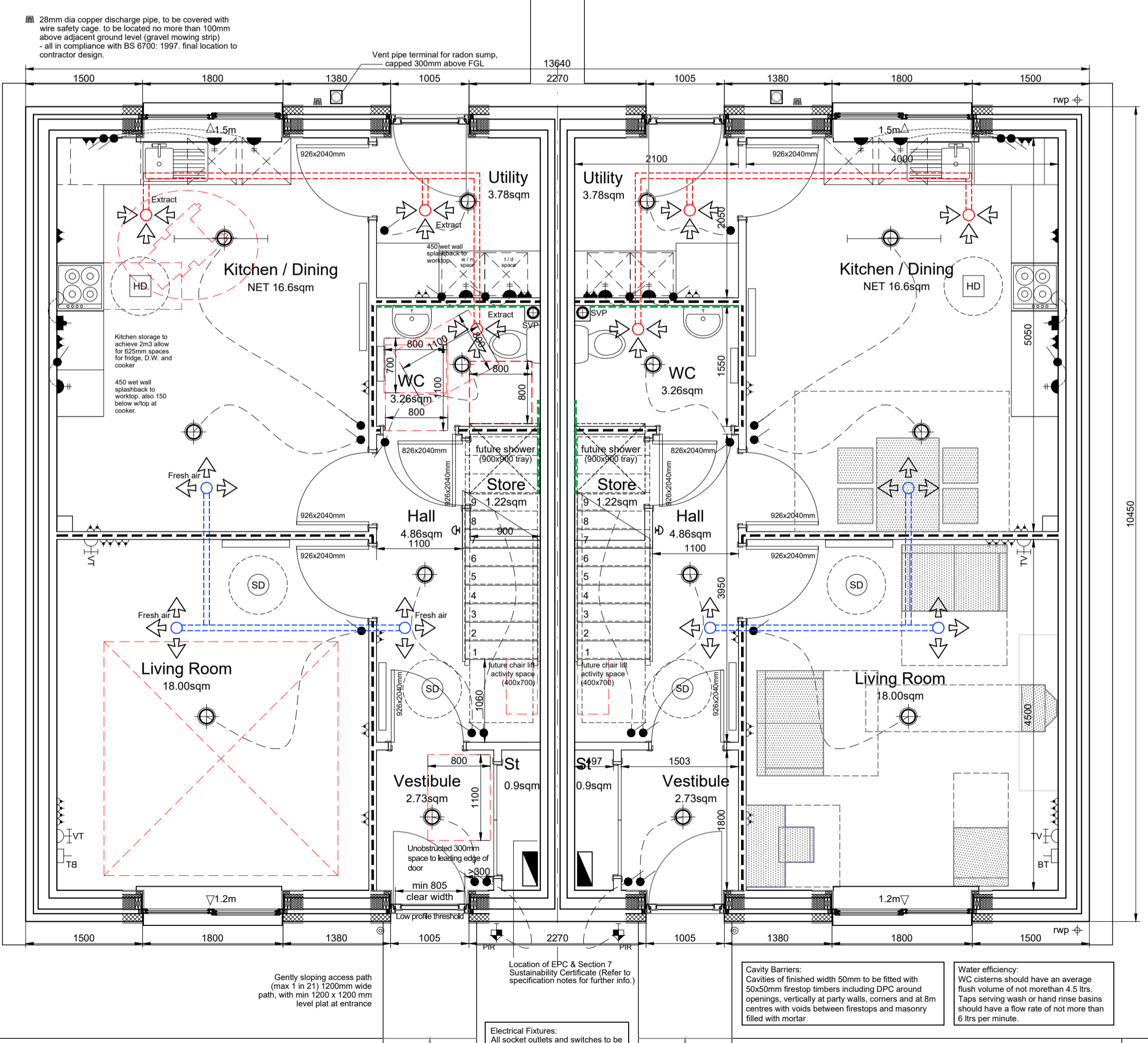
SYMBOL	DESCRIPTION	HEIGHT
Light switch	Light switch	1050
Two way light switch	Two way light switch	1050
Pull cord switch	Pull cord switch	(to cord end)
External socket with RCD	External socket with RCD	450
Multiple retractable 13amp switched socket outlet (housed within worktop)	Multiple retractable 13amp switched socket outlet (housed within worktop)	450
Twin 13amp switched socket outlet	Twin 13amp switched socket outlet	1050
Switched fused spur point (High level/ low level)	Switched fused spur point (High level/ low level)	2200/800
Switch at worktop level	Switch at worktop level	1050
Cooker control unit for hob & oven with low level connection point	Cooker control unit for hob & oven with low level connection point	1050
Fused spur point switched from multi gang appliance as noted on drawing (High level/ low level)	Fused spur point switched from multi gang appliance as noted on drawing (High level/ low level)	2200/600
Multi gang switch - appliance noted on plan	Multi gang switch - appliance noted on plan	1050
Central heating control unit	Central heating control unit	1050
Central heating weather compensator (North facing Wall only)	Central heating weather compensator (North facing Wall only)	1050
Heating Thermostat	Heating Thermostat	1050
Shaver outlet	Shaver outlet	1200
TV Aerial Co-axial	TV Aerial Co-axial	450
British Telecom Outlet	British Telecom Outlet	450
Mains operated CO2 monitor capable of recording and displaying readings within a range of at least 0 - 5.000 ppm CO2 and logging and displaying data at no more than 15min intervals for at least 24hrs.	Mains operated CO2 monitor capable of recording and displaying readings within a range of at least 0 - 5.000 ppm CO2 and logging and displaying data at no more than 15min intervals for at least 24hrs.	1500
ACCESS TO MANUAL CONTROLS: Window handle locations & heights	ACCESS TO MANUAL CONTROLS: Window handle locations & heights	XXXmm (Max height of window handle)

INTERNAL PARTITION LEGEND

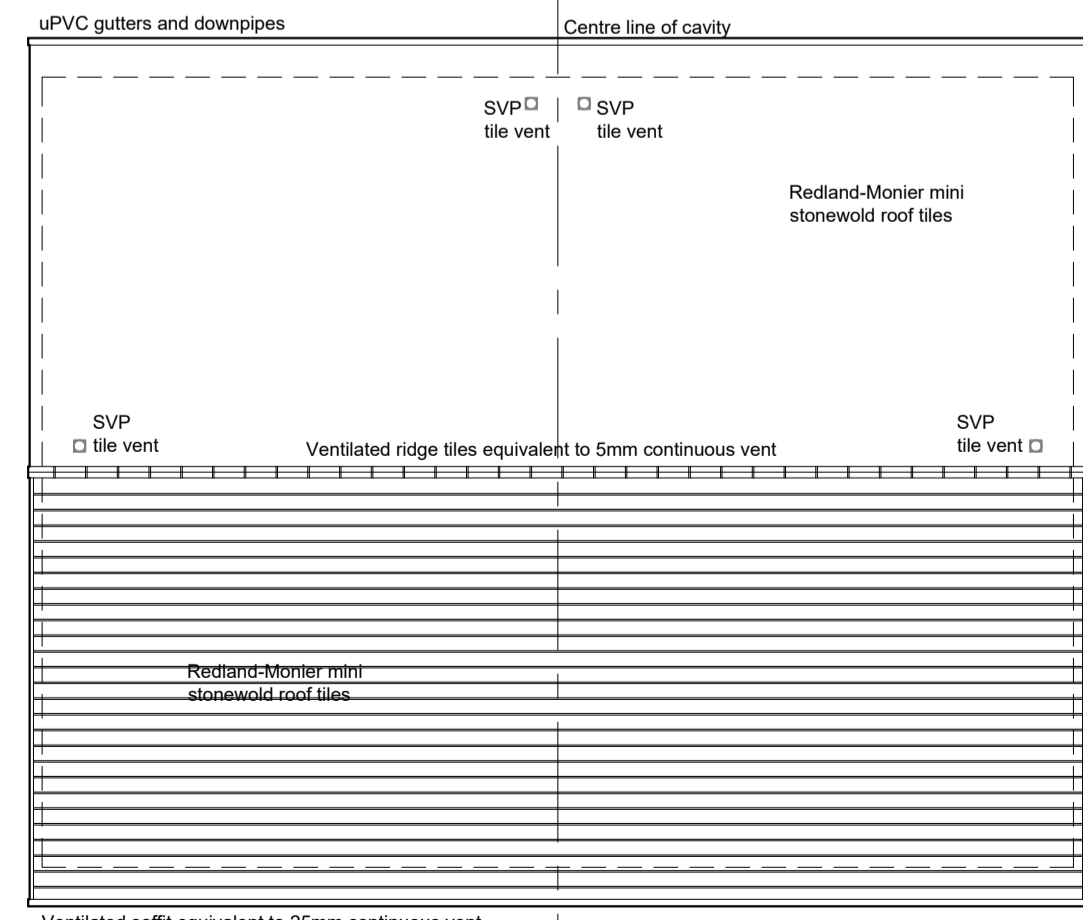
Wall - Type 2 Load Bearing with Sound Attenuation Requirements	Partition Type 1 - Non - Load Bearing with Sound Attenuation Requirements
Partition Type 1A - Non - Load Bearing with Sound Attenuation Requirements	Partition Type 1B - Non - Load Bearing with Sound Attenuation Requirements
Indicates Load Bearing Partition	Indicates partition is to be easily demountable
Type 2A - Partition Load Bearing with Sound Attenuation Requirements	Robust wall construction behind sanitaryware to provide substrate suitable to take future mounting of grab rails, all per Figure 3.3.2 of Standard 3.12.3
Indicates Load Bearing Partition	

EXTERNAL WALL LEGEND

Walls (WT1)	140mm closed panel hybrid warm timber frame construction. 40 mm PU foam to all external walls internally. 35 mm service zone void formed by timber battens and treated with 15 mm plasterboard. Min 50mm cavity with concrete block cladding and render finish.
Walls (WT2)	Panel construction as per Wall Type 1 with light weight rain screen vertical fit and mass Eternit cladding boards
Walls (WT3)	Separating Wall to comply with Robust Detail W-VT-2 Timber Frame with sheathing board. The development site and each individual unit will be treated as a separate unit. Purchase Statement to be supplied to Local Authority (verifier) prior to construction. No post construction testing is required.
Separating wall construction (S)	Separating wall construction (S) = 0. Timber frame twin stud wall with sheathing. Separating wall to have effective edge sealing & to be fully filled. Edge sealing is to prevent air going in or out of the cavity. The sealing is to be placed at the top, bottom and vertically. The cavity is to be fully filled with mineral wool insulation.



GROUND FLOOR PLAN
Scale 1:50



ROOF PLAN
Scale 1:100

REV	DATE	DESCRIPTION	DRN

Brewell Stirling CONSULTING

38 WALKER TERRACE, TILLCULTRY, FK13 6EF 01259 750301
5 NESS BANK, INVERNESS, IV2 4SF 01463 233760
15 LOCHSIDE STREET, OBAN, PA34 4HP 01631 359054

PROPOSED 17 UNITS FOR OHAL
SITE K-5 PHASE 1A WALLIWALL, KIRKWAL
ORKNEY BUILDERS (CONTRACTORS) LTD

5A6PV PLANS, ELEVATIONS AND SECTION

STATUS:	BUILDING WARRANT
SCALE:	1:50 / 100
PAPER SIZE:	A1
DWG No:	4808-03-302
DATE:	Jul 2022
GM	REV.